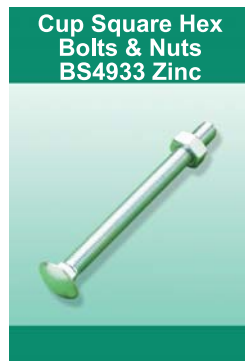
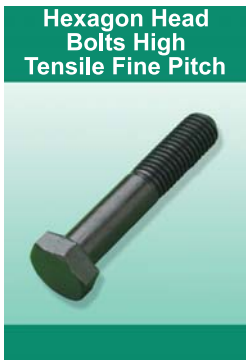
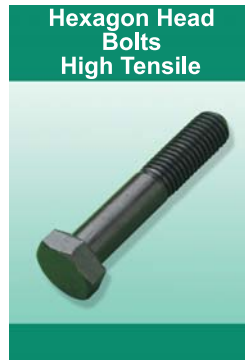
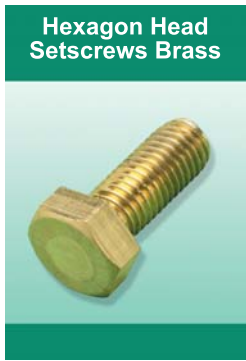
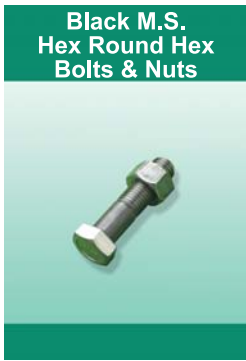
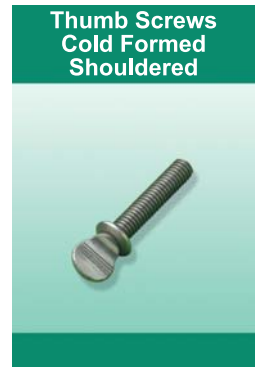
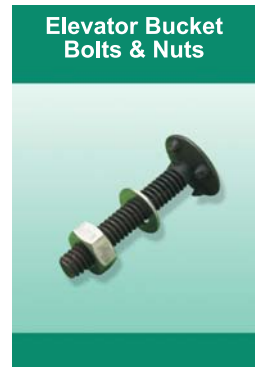
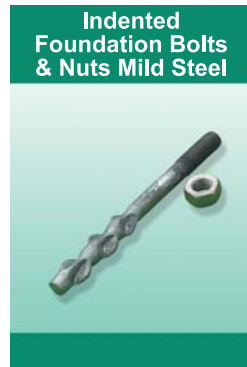
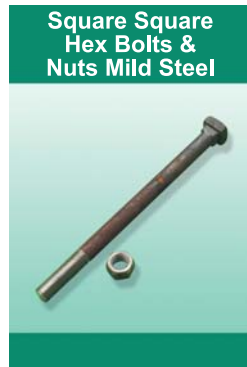


SECTION 15 - BOLTS & SETSCREWS OF VARIOUS FORMS



SECTION 15 - BOLTS & SETSCREWS OF VARIOUS FORMS



RANGE OF BOLTS & SETSCREWS AVAILABLE (SIZES,LENGTHS)

METRIC

SIZE	LENGTH
M3	8
M4	10
M5	12
M6	16
M8	20
M10	25
M12	30
M14	35
M16	40
M18	45
M20	50
M22	55
M24	60
M27	65
M30	70
M36	75
	80
	90
	100

BSF,BSW,UNF,UNC

SIZE	LENGTH
1/4	3/8
5/16	1/2
3/8	5/8
1/2	3/4
5/8	1
3/4	1.1/4
7/8	1.3/4
1	2
	2.1/4
	2.1/2
	2.3/4
	3
	3.1/2
	4
	4.1/2
	5
	6

* ALL BOLTS & SETSCREWS ARE AVAILABLE IN GRADE. 4.6,8.8,10.9,AND 12.9