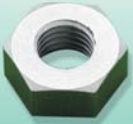


SECTION 17 - NUTS

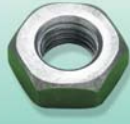


# SECTION 17 - NUTS

Hexagon Full Nuts  
Bright Mild Steel



Hexagon Full Nuts  
Cold Formed



Hexagon Full Nuts  
Heavy Series



Hexagon Full  
Nuts Brass



Hexagon Full Nuts  
Stainless Steel



Hexagon Full  
Nuts Nylon



Hexagon Full Nuts  
Black Mild Steel



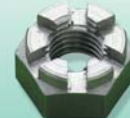
Hexagon Lock Nuts  
Bright Mild Steel



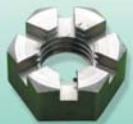
Hexagon Lock Nuts  
Cold Formed



Castle Nuts  
Bright Mild Steel



Slotted Nuts  
Bright Mild Steel



Dome Nuts  
Bright Mild Steel



Wing Nuts  
Cold Formed



Pressed Nuts  
Mild Steel



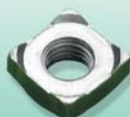
Hexagon Pressed  
Nuts Self colour



Hexagon Weld  
Nuts Mild Steel



Weld Nuts  
Mild Steel



Pal Nuts  
Mild Steel



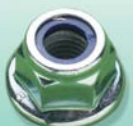
Pronged Tee  
Nuts Steel



Hexagon Flange  
Nuts Cold Formed



Nylon Insert  
Hexagon Flange  
Nuts Cold Formed



Nylon Insert Nuts  
Steel Type 'P'



Nylon Insert Nuts  
Steel Type 'T'



All metal locking  
Nuts Industrial S/C



Binx Nuts  
Zinc Plated



**SECTION 17 - NUTS**RANGE OF SIZES AVAILABLE

METRIC	UNF	UNC	BSF	BSW	BA
M2	3/16	3/16	3/16	3/16	0BA
M2.5	1/4	1/4	1/4	1/4	2BA
M3	5/16	5/16	5/16	5/16	3BA
M3.5	3/8	3/8	3/8	3/8	4BA
M4	7/16	7/16	7/16	1/2	6BA
M5	1/2	1/2	1/2	5/8	8BA
M6	9/16	5/8	5/8	3/4	
M8	5/8	3/4	3/4		
M10	3/4	7/8			
M12	7/8	1"			
M14	1"				
M16					
M18					
M20					
M22					
M24					
M30					

\* ALL ARE AVAILABLE IN ZINC, ZINC YELLOW, SELF COLOUR AND GALVANISED